

EndoSHARE

PATIENT PORTAL

Track your symptoms 24/7 online.

What is EndoShare?

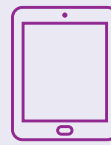
Talking about pain and sex and what you need from your health care provider can be hard. EndoShare helps by walking you through a simple set of questions you can answer before your appointment to **get you ready** and to help your health care provider better understand what you need.

No Decision About You, Without You

Since everyone's endometriosis is different, the best decisions are the one that meets **your** needs. It's important that you and your healthcare provider work **together** to find a treatment plan that's right for you. EndoShare will help you describe your endometriosis pain and symptoms, review your preferences and goals for your appointment, review treatment options, and *talk about what's important to you*.

STEP 1: GET STARTED

Register



STEP 2: TRACK SYMPTOMS WITHIN YOUR DASHBOARD

DASHBOARD

Your available trackers

- Pain Location & Impact
- Days In Pain
- Pain Level

Pain Location & Impact

1 2

1 Affected Areas
Tap to select the areas

I have no affected areas

FRONT BACK

CANCEL NEXT

Days In Pain

How many days have you been in pain in the last month?
In the past 31 days: 0 = no days, 31 = every day

0

CANCEL SAVE

STEP 3: PREPARE YOUR QUESTIONS AHEAD OF YOUR APPOINTMENT

DOC TALK

Simply visit **ENDOSHARE.NET**, register, and take charge today.